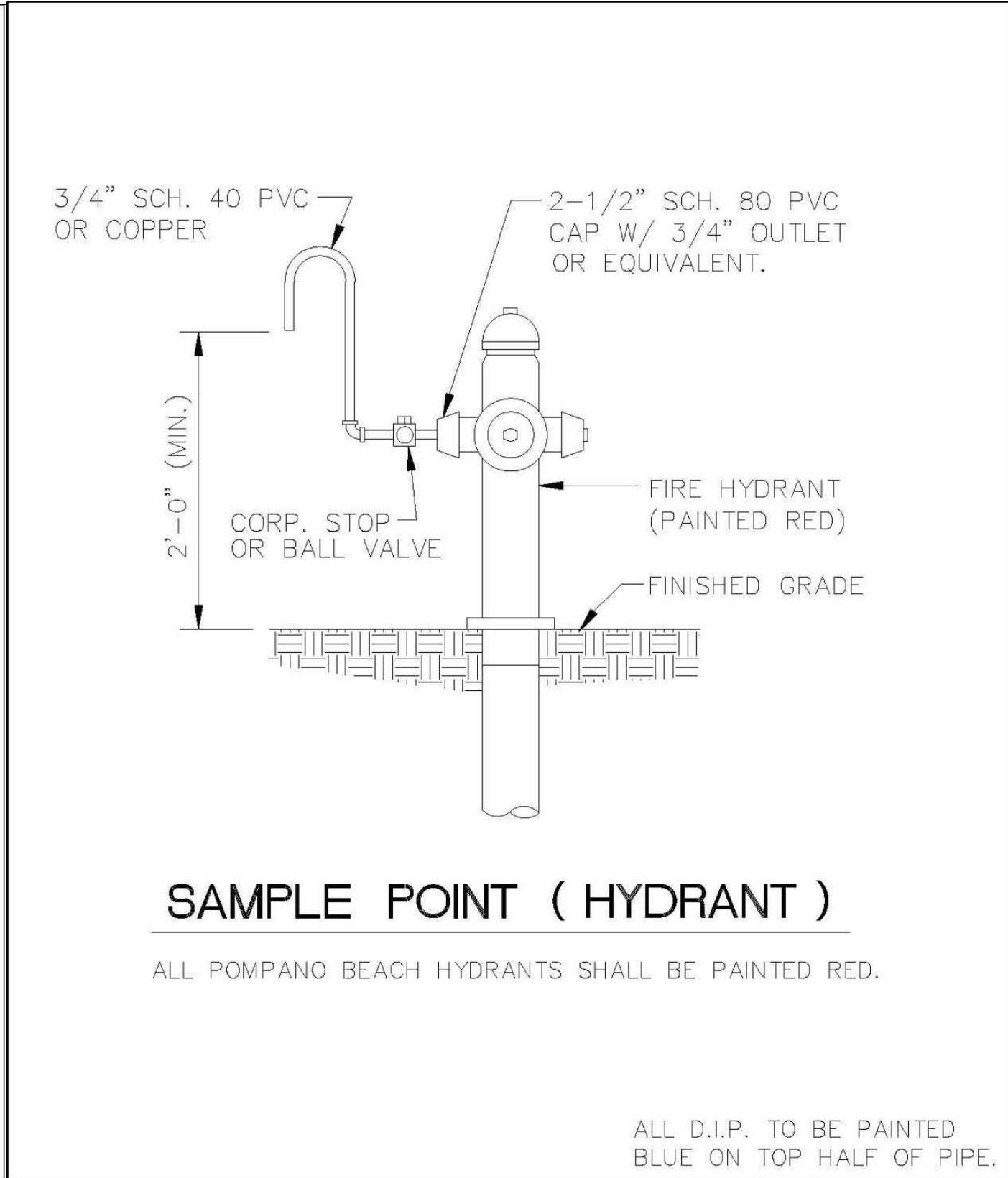


SAMPLE POINT (MAIN)

ALL D.I.P. TO BE PAINTED
BLUE ON TOP HALF OF PIPE.

ENGINEERING STANDARDS 2022			
REVISIONS		ENGINEERING DIVISION	SAMPLE POINT (MAIN)
BY	DATE		
S.S.	04-2005	CITY OF POMPAÑO BEACH	DATE: MAY 2022 DWG. NO.
		SCALE: N.T.S.	100-1

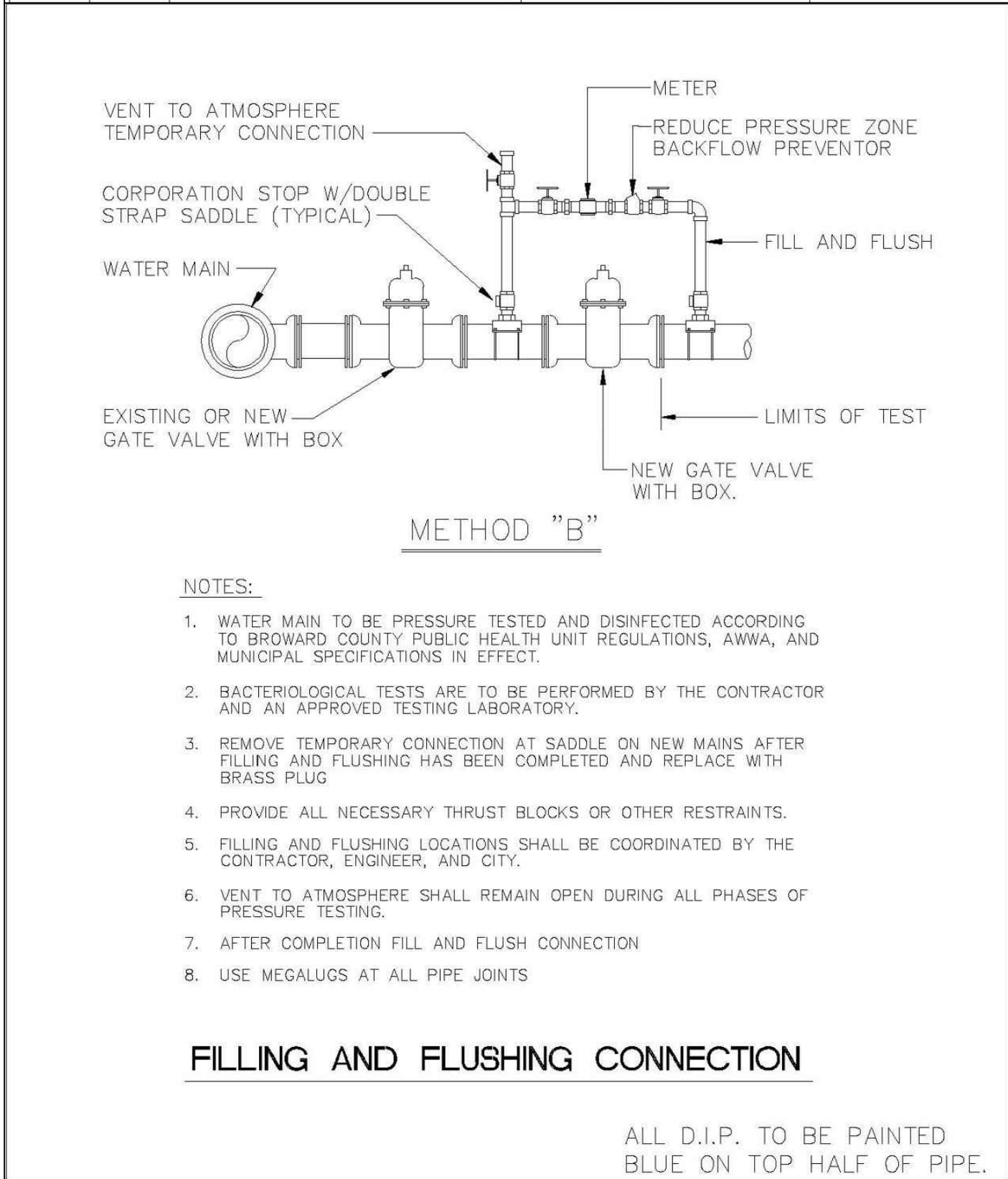


SAMPLE POINT (HYDRANT)

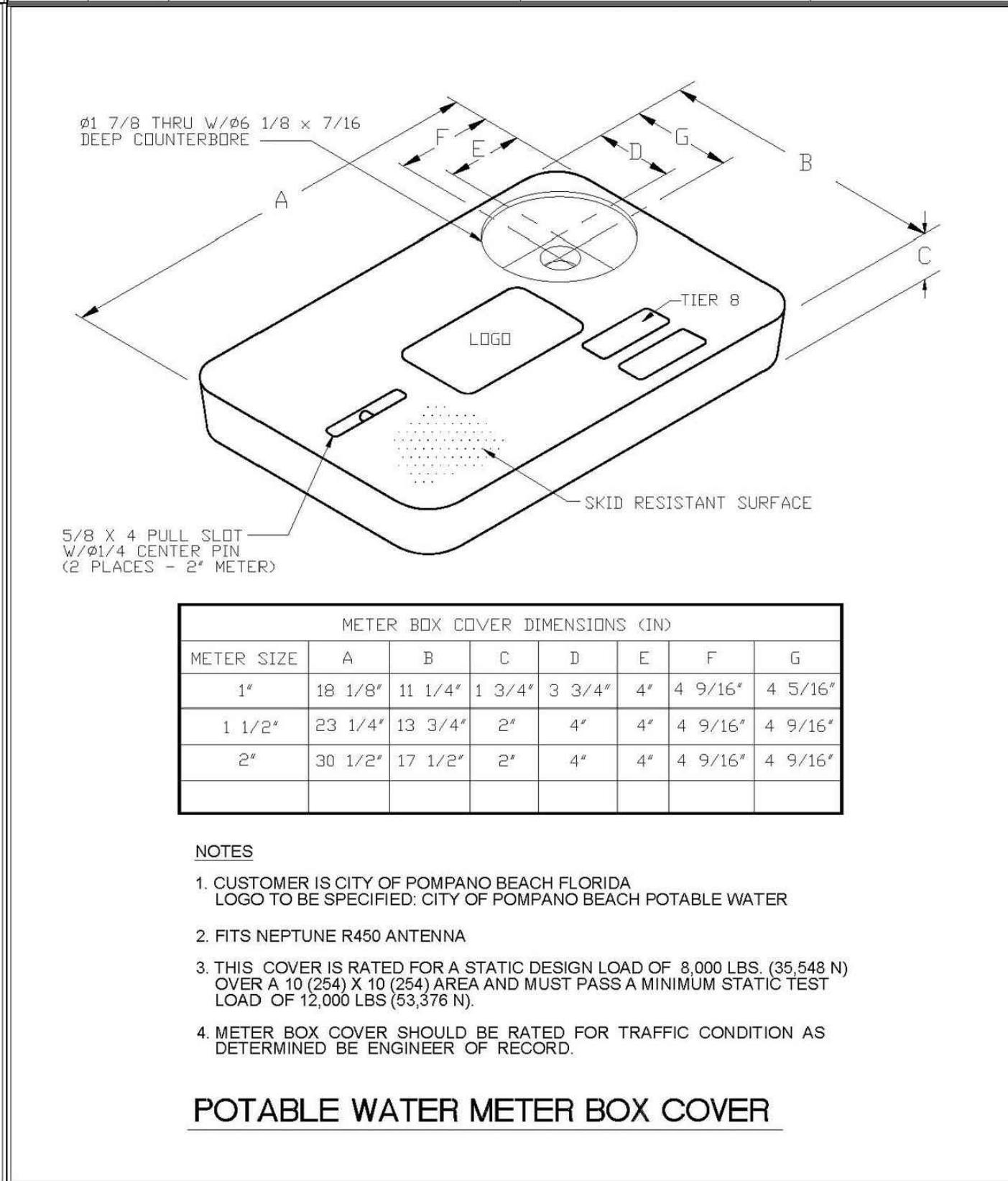
ALL POMPAÑO BEACH HYDRANTS SHALL BE PAINTED RED.

ALL D.I.P. TO BE PAINTED
BLUE ON TOP HALF OF PIPE.

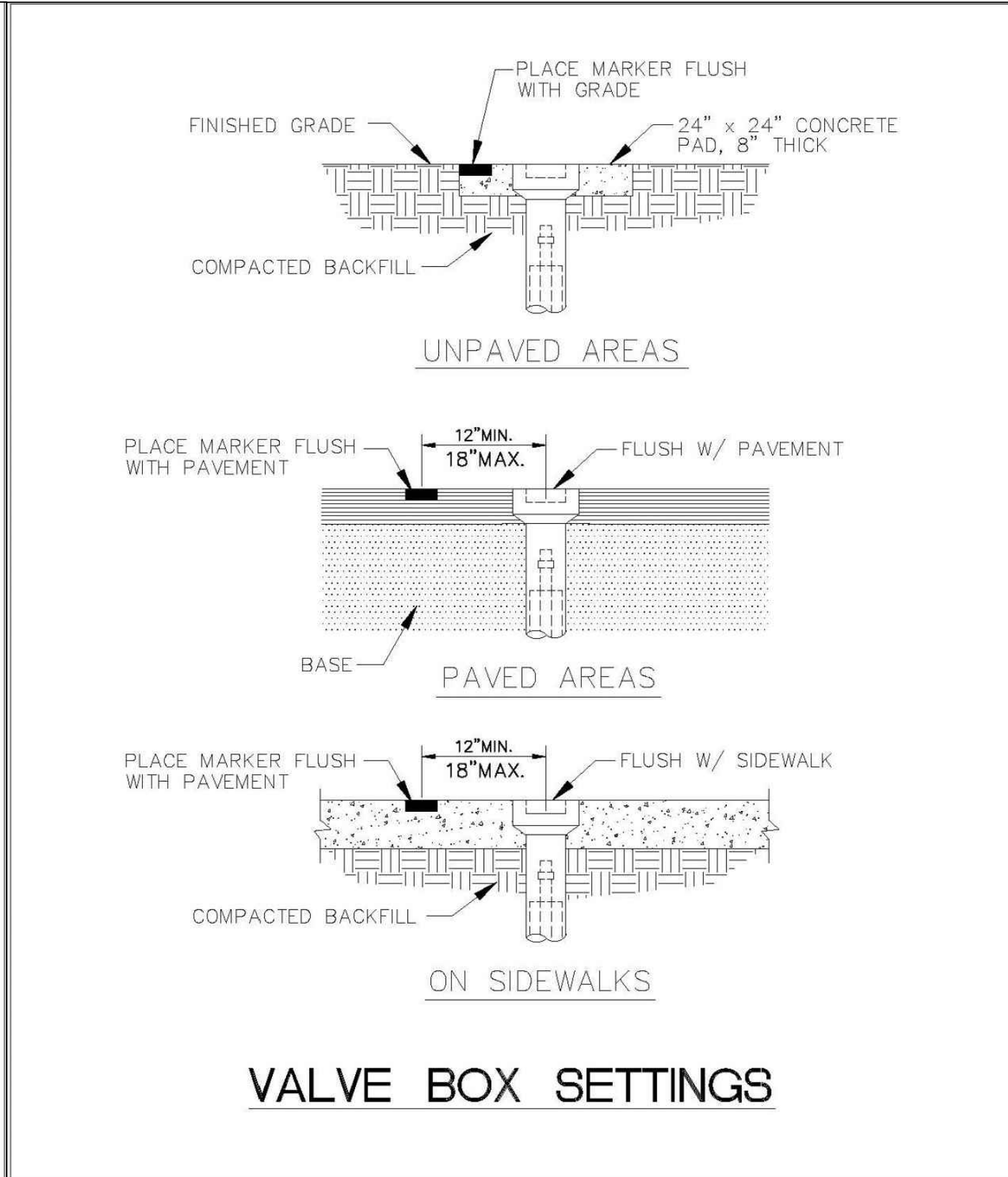
ENGINEERING STANDARDS 2022			
REVISIONS		ENGINEERING DIVISION	SAMPLE POINT (HYDRANT)
BY	DATE		
S.S.	04-2005	CITY OF POMPAÑO BEACH	DATE: MAY 2022 DWG. NO.
		SCALE: N.T.S.	101-1



ENGINEERING STANDARDS 2022			
REVISIONS		ENGINEERING DIVISION	FILLING / FLUSHING CONNECTION
BY	DATE		
S.S.	04-2005	CITY OF POMPAÑO BEACH	DATE: MAY 2022 DWG. NO.
T.W.	11-2007		
S.S.	01-2012		
		SCALE: N.T.S.	104-1

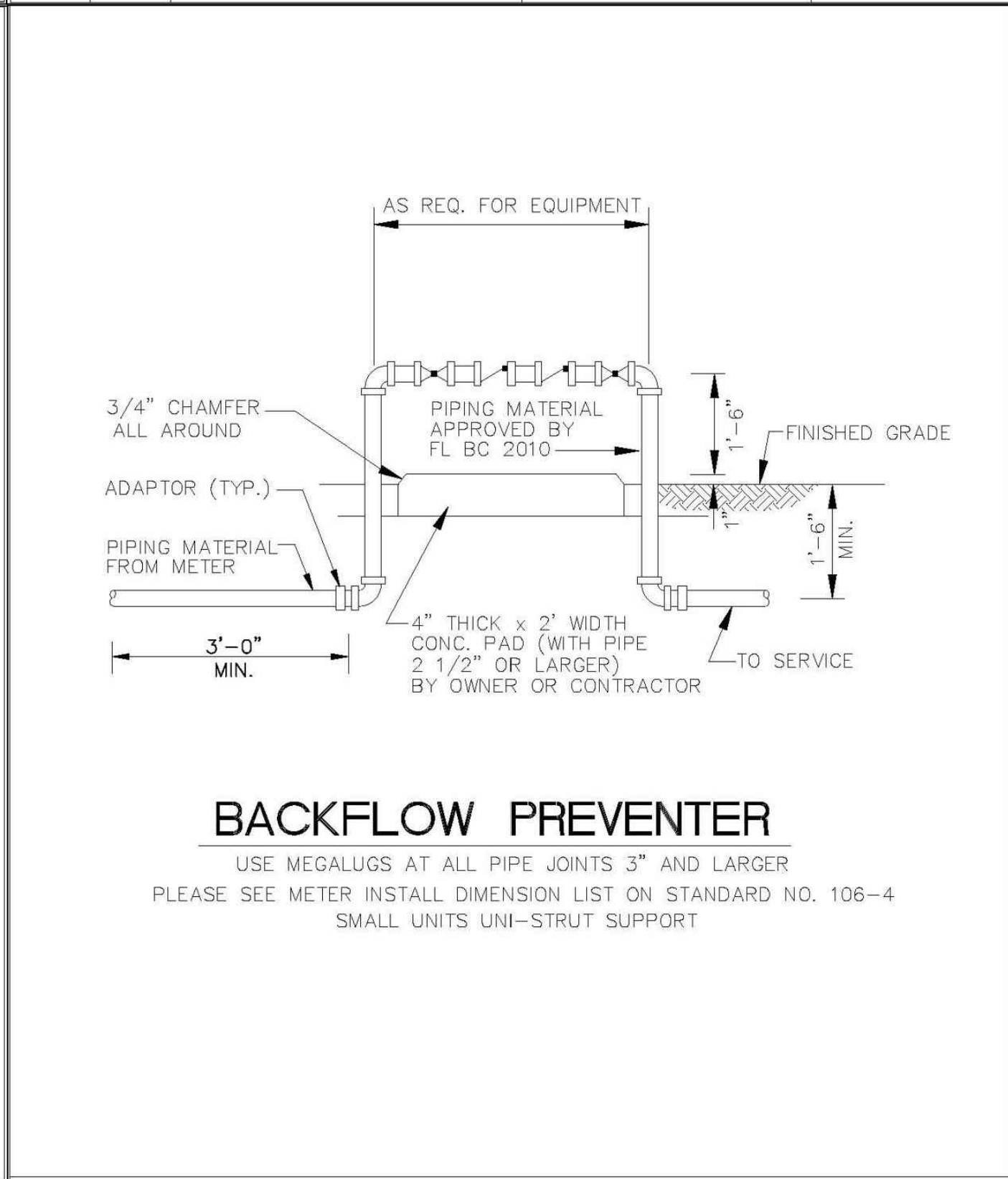


ENGINEERING STANDARDS 2022			
REVISIONS		ENGINEERING DIVISION	TYPICAL METER BOX COVER
BY	DATE		
S.S.	11-2012	CITY OF POMPAÑO BEACH	DATE: JAN. 2022 DWG. NO.
		SCALE: N.T.S.	105-3

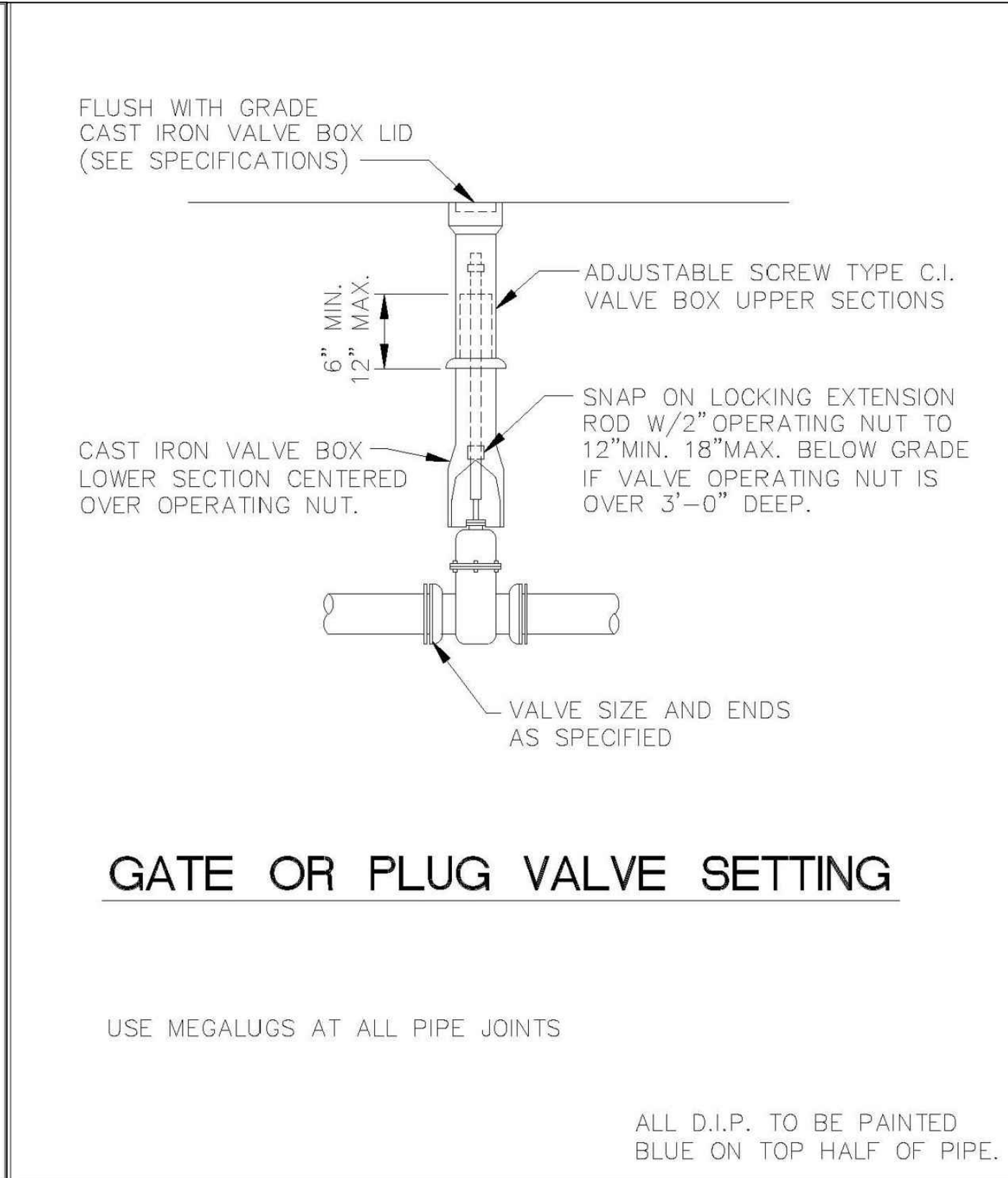


VALVE BOX SETTINGS

ENGINEERING STANDARDS 2022			
REVISIONS		ENGINEERING DIVISION	VALVE BOX SETTINGS
BY	DATE		
S.S.	04-2005	CITY OF POMPAÑO BEACH	DATE: MAY 2022 DWG. NO.
		SCALE: N.T.S.	102-1



ENGINEERING STANDARDS 2022			
REVISIONS		ENGINEERING DIVISION	BACKFLOW PREVENTER
BY	DATE		
S.S.	04-2008	CITY OF POMPAÑO BEACH	DATE: MAY 2022 DWG. NO.
T.W.	03-2009		
S.S.	11-2012		
		SCALE: N.T.S.	106-1

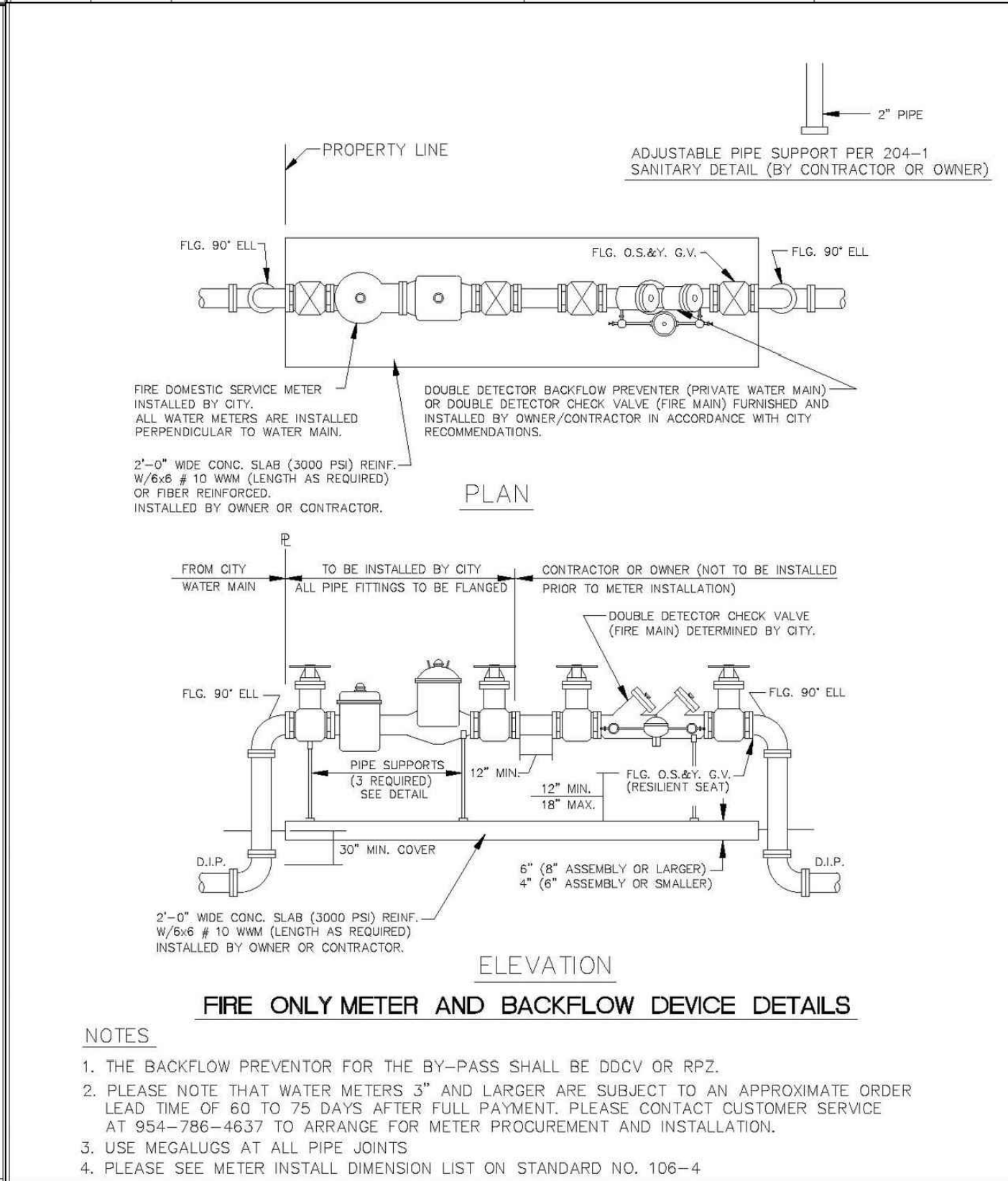


GATE OR PLUG VALVE SETTING

USE MEGALUGS AT ALL PIPE JOINTS

ALL D.I.P. TO BE PAINTED
BLUE ON TOP HALF OF PIPE.

ENGINEERING STANDARDS 2022			
REVISIONS		ENGINEERING DIVISION	GATE OR PLUG VALVE SETTINGS
BY	DATE		
S.S.	04-2005	CITY OF POMPAÑO BEACH	DATE: MAY 2022 DWG. NO.
T.W.	11-2007		
		SCALE: N.T.S.	103-1



ENGINEERING STANDARDS 2022			
REVISIONS		ENGINEERING DIVISION	FIRE ONLY METER AND BACKFLOW DEVICE
BY	DATE		
S.S.	05-2011	CITY OF POMPAÑO BEACH	DATE: MAY 2022 DWG. NO.
S.S.	11-2012		
S.S.	12-2013		
		SCALE: N.T.S.	106-3

REVISIONS

Jeff H. Iravani, Inc.
Consulting Engineers

1934 COMMERCE LANE, SUITE 5
JUPITER, FLORIDA 33458
EMAIL: JHI@ellsouth.net

TEL: (561) 575-6030
FAX: (561) 575-6088
WEBSITE: www.jhinc.com

201 SW 12th Ave

Pompano Beach, Florida

Water & Wastewater
Details

JOB NO. 2208-1411

DRAWN BY JBI

DESIGNED BY JBI

SCALE N.T.S.

DATE 01/28/2023

SEAL

FR # 6986

SHEET NO. C-10